

Son et Lumière Committee

Joanna Cadman
Retta Casbard
Sally Caton
Michael Cochrane
Carol Elms
Geoffrey Elms (Chairman)

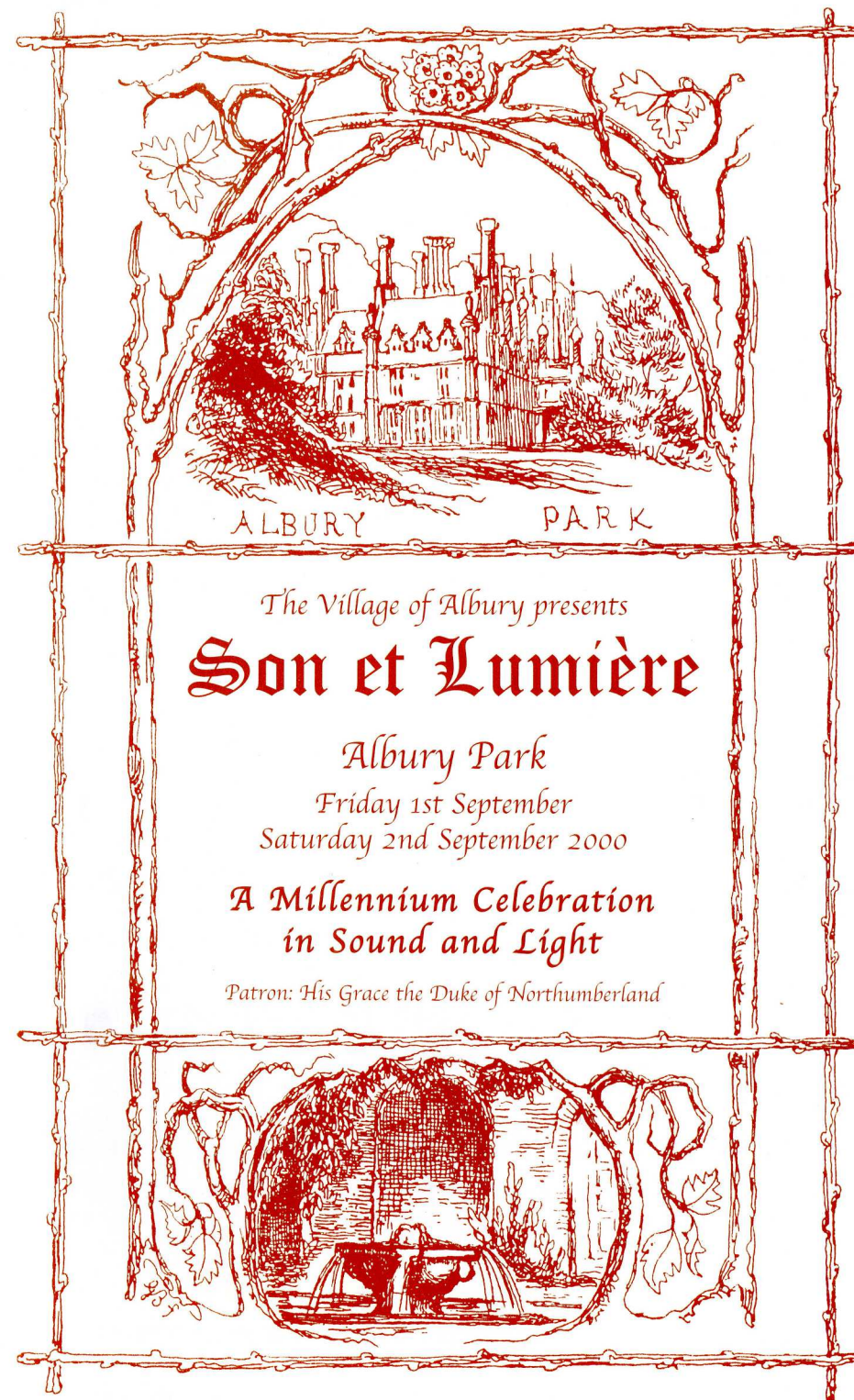
Pat Grayburn
Cass Macpherson
Iain Macpherson
Andrew Peake
Gill Tyrrell
Michael Woods

Village events of this sort only become realities with financial and other support from well-wishers. We gratefully acknowledge the generous response we have received from companies and individuals.

Christine Allen (Abracadabra)
Artery Design
Gerald and Mary Bland
Diana Boyd Gibbins
Bob & Retta Casbard
Willie & Monica Cassels
Anthony & Sarah Cassidy
Peter & Denise Chamberlain
Michael and Katia Demetriadi
Brewin Dolphin
Evelyn Charitable Settlement
Caffe Uno
Clarke Gammon
Commercial Press
Craigie Taylor
Wendy Duncan
Grace Consulting
John & Pat Grayburn
Paul & Lalage Glaister
Guildford Borough Council

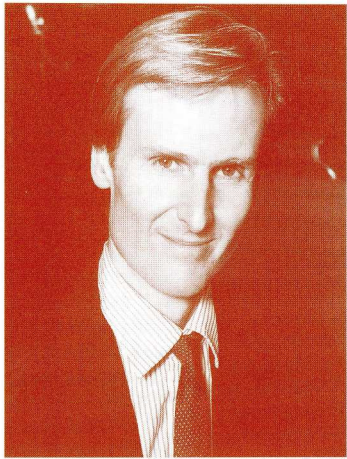
Peter & Tessa Grundy
Laurence Harbottle
Michael & Mary Hutchison
Land and Water
Lloyds TSB
Millennium Awards for All
Mary Plunket Greene
Roland Callingham Foundation
J Sainsbury
Star Energy
Surrey Advertiser
John & Anne Syms
Jenny Staunskjaer
SITA
Shere Arts
Tilney Investment Management
Tite and Lewis
Watkins Oram & Co.
Michael & Carolyn Woods

Surrey Advertiser





Alnwick Castle.
Northumberland.
NE66 1NG



I send my best wishes, and pray that you have a wonderful evening for the Albury Son et Lumière on 1st and 2nd September. Albury Park is a unique setting, steeped in history, and it is with great pride that I can play a small part in maintaining the character and beauty of its landscape over my lifetime, so that future generations can enjoy it. I am delighted that the community of Albury are doing so much to celebrate the Millennium, and I only wish that my wife and I could be there on 2nd September.

Northumberland

The idea of a Son et Lumière in Albury Park dates back to Dr Maurice Burton who lived in Albury for over thirty years and was regarded by many as the father of the village. He loved Albury and fired the local community with his enthusiasm. Chairman of nearly all the local societies, he founded the Albury Trust which was set up as a charity to preserve the beauty of this parish which is so close to London yet is so rural.

The Son et Lumière was never realised in his lifetime, though there was a series of midsummer presentations in our Saxon Church by the History Society (of which of course he was Chairman!). These were to be the seedbed of our show. The Albury Millennium Group under the Chairmanship of John Foulsham felt that here was a golden opportunity to celebrate Albury in Sound and Light. The management of the event was given to the Albury Trust.

Frontispiece from an original illustration for the post box at Albury Park.

'The Albury Story' in Sound and Light

One thousand years in the life of Albury

On the lawns of Albury Park Mansion

by kind permission of the Country Houses Association

**Friday 1st September 2000
Saturday 2nd September 2000**

There is an Exhibition associated with the production in the Old Church in Albury Park.

During your picnic, the Godalming Band under the direction of Mr David Wright will entertain you.

Guests are welcome to walk in the grounds prior to the Show but are asked to remain still during the performance.

Resumé of the story

The play begins with a synopsis of events which are expanded as the story unfolds. We then go back to 1066 and to Domesday and to the first incident as described by Martin Tupper, the Victorian poet and historian who lived in Albury. He introduces us to wicked Prince (later King) John, Stephen Langton who became Archbishop of Canterbury and Alice, his early love, who became Abbess of St. Catherine's. Tupper relates the legend of the Silent Pool and has one of his many clashes with Henry Drummond, a principal character in the history of the village.

Back in the middle Ages we meet two squabbling landowners, Thomas Weston and John D'Abernon and we hear how the Black Death affected the village and brought its grim harvest to the Old Church.

The Seventeenth Century takes us to Albury Mansion with Thomas Howard, Earl of Arundel and his playful wife. We meet William Oughtred, Rector of Albury and tutor to Sir Christopher Wren. After the Civil War, John Evelyn designs the garden, which is still widely admired, while his brother George designs the Library in the Mansion.

During the ownership of Heneage Finch (who became the first Earl of Aylesford) there is a disastrous fire, followed some years later by a strike of lightning on the Church. The Mansion passes to Captain Finch, who initiates the removal of the village to nearby Weston, the Albury of today.

Poverty and the harsh conditions of life give rise to smuggling and its attendant cruelties.

The next phase of the history focuses on Henry Drummond, the final clearance of the village, the closing of the Old Church, clashes with Martin Tupper and the commissioning of the architect Augustus Pugin. The Northumberland family become the landowners and see Albury through the World Wars. The story ends as it began echoing some of the events you have heard and seen.

The Albury Story

written by Martyn Read

CAST

Narrators	Penelope Keith James Bolam
Countess of Arundel	Kate O'Mara
Henry Drummond	Edward Hardwicke
Martin Tupper	Richard O'Callaghan
Thomas Howard, Earl of Arundel	Michael Cochrane
John Aubrey	Gary Raymond
Captain Finch	Martyn Read
Louisa Bray	Susan Jameson
The Mother	Belinda Carroll
Alice	Amy Williams

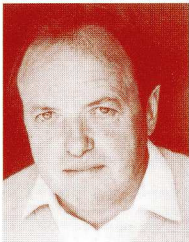
Other parts played by members of the cast

Sound Track Directed by Michael Bartlett
(*Business Sound Ltd., Bramley*)

Video Production and Sound by Jellytree Video Arts

Lighting by Astral Design

Produced by Michael Cochrane

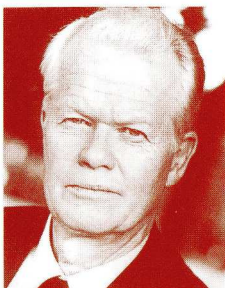


JAMES BOLAM - One of the 'Likely Lads', his recent TV work includes the comedy *Pay and Display*, the drama series *Dirty Tricks* with Martin Clunes, and *Close and True* with Robson Greene. He made two recent films: Graham Greene's *The End of the Affair* and a new gangster movie *It Was An Accident* due to be released shortly. Last summer he was at the Chichester Festival Theatre playing the lead in David Turner's *Semi Detached*.

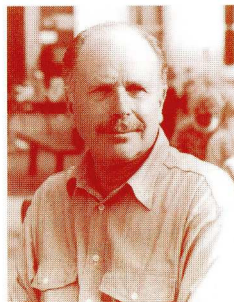
BELINDA CARROLL has many West End credits including *There's a Girl in My Soup*, *Peter Pan*, *No Sex Please We're British*, *Charley's Aunt*, *Cards On The Table*, *Stepping Out*, *The Pleasure of His Company*. Her television appearances include *Callan*, *Tartuffe*, *Lovejoy*, *Malice Aforethought*, *Question of Guilt*, *P.G. Wodehouse Playhouse*, *A Dangerous Inheritance*. She played the lead in the film *No Longer Alone* and was in *Yellow Dog*.



MICHAEL COCHRANE has appeared in the West End in *Noises Off*, *The Merchant of Venice*, *Married Love*, *13 Rue de l'Amour*, *Nuremberg Trials*, *The Colour of Justice - The Stephen Lawrence Inquiry*. His many television appearances include *Wings*, *Love in a Cold Climate*, *The Citadel*, *Hay Fever*, *Fortunes of War*, *Doctor Who*, *Taggart*, *Eastenders*, *The Chief*, *Sharpe*, *The Ambassador*, *Nancherrow*, *Longitude*, *Big Bad World*, *Perfect World*, *The Innocents*. He has done over one thousand broadcasts, most recently *The Vicar of Wakefield*, *Bookends* and *The Pickwick Papers*. He has his own Corporate Entertainment Company. He is currently at the Yvonne Arnaud Theatre in a new play *Beyond a Joke*.



EDWARD HARDWICKE was an early member of Laurence Olivier's original National Theatre Company. Among many productions in the next seven years his performance in *A Flea in her Ear* won the Clarence Derwent Award. His West End appearances include Peter Ustinov's *Photo Finish* and more recently *The Secret of Sherlock Holmes* playing Doctor Watson. Television credits include Judas in Dennis Potter's *Son of Man*, *Colditz*, *Strangers and Brothers*, *The Pallisers*. Films include Laurence Olivier's *Othello*, *A Flea in her Ear*, *Day of the Jackal*, *Shadowlands*, *Richard III*, and *Elizabeth*.



SUSAN JAMESON - Her recent stage work includes the Talking Head monologue *Bed Among the Lentils* by Alan Bennett, the World Première of *You Say Tomatoes* by Bernard Slade at Basingstoke, and a new translation of Moliere's *The Bourgeois Gentleman* at Nottingham and Birmingham. She has just done *Heartbeat* and is due to return in the autumn. She is also in the series *Close and True* which will be on ITV later this year.



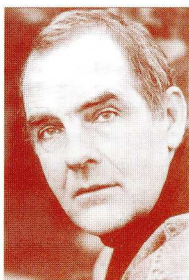
PENELOPE KEITH OBE has played the leading role in many TV favourites: *The Good Life*, *To the Manor Born*, *Executive Stress*, *No Job For a Lady*, *Law & Disorder*, *Next of Kin*. She guest starred in *The Morecambe and Wise Show* and also starred in *Private Lives*, *Hay Fever*, *On Approval*, *Donkey's Years*, *Waters Of The Moon* and many others. In the West End she has led the company in *How The Other Half Loves*, *The Dragon's Tail*, *Suddenly At Home*, *Moving*, *Hobson's Choice*, *Captain Brassbound's Conversion*, *Miranda*, *The Importance of Being Earnest*, *Mrs Warren's Profession* and *The Norman Conquests* among others. She has presented *Capability Brown*, *Growing Places*, *Behind The Scenes* and *What's My Line*. She has received many awards for services to Television, Theatre and Radio and was awarded the OBE in 1998.



RICHARD O'CALLAGHAN has done several seasons with the National Theatre and the Royal Shakespeare Company. West End theatre include *Amadeus*, *The Seagull*, *Midsummer Night's Dream*, *The Boys from Syracuse*. Recent TV work includes *McCallum*, *The Adventures of Tom Jones*, *The Prince and the Pauper*, *Casualty*. He is currently touring a new play *God Only Knows* with Derek Jacobi which is playing at the Yvonne Arnaud Theatre in September.

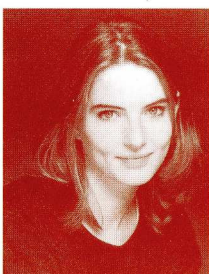
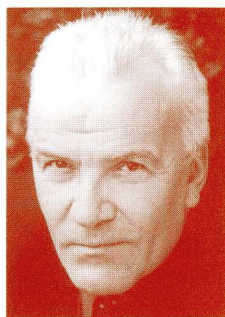


KATE O'MARA is probably best known for her many TV appearances, including *Dynasty*, *Howard's Way*, *The Brothers*, *Dr Who* and more recently *Absolutely Fabulous*. She has worked extensively in the Theatre, most recently in the Peter Hall production *An Ideal Husband* and the critically acclaimed *Colombe*. She has played most of the leading female Shakespearean roles including *Cleopatra*. She has her own Theatre Company and has had three books published. She lived in Albury for some years.



GARY RAYMOND has lived in Albury for forty years. He was married at Shere Church, two of his children were married at Albury Church and his mother-in-law lived in Albury Park from 1980-1987. Films: *El Cid*, *Look Back in Anger*, *Suddenly Last Summer*, *Jason and the Argonauts*, *Greatest Story Ever Told*, *Playboy of the Western World*. TV: *Rat Patrol*, *The Attic*, *Scarlett*, *Casualty*, *Persuaders* and many more. Theatre: National, Royal Court, Lyric, Vaudeville and The Haymarket. In December he will be in Yvonne Arnaud's Mill Theatre in *Dear Liar* by Jerome Kitty.

MARTYN READ (Writer of *The Albury Story*) is the author of over thirty plays for Radio, including *Waving to a Train* and *Scouting for Boys*, both winners of the BBC Giles Cooper Award. His plays for Television include *Long Term Memory*, *The Triangle* and an adaptation of *Waving at a Train*. Theatre work includes *221B* (about Dr. Watson) and *Happy Families*. He has also written many songs and sketches for revue, previous *Son et Lumières*, Local History Shows and has collaborated with Michael Cochrane on several Corporate Entertainments. He has also been an actor for twenty five years and has recently been seen in *Casualty* and the film *Gangster No. 1*.



AMY WILLIAMS - Films: *Only In Defence*. Theatre: *The Pleasure of His Company* at the Mill Theatre in Sonning, *Rookery Nook*, *Dangerous Corner*, *Nobody's Perfect* at Southwold Theatre and *Blood Wedding*, *A Chorus of Disapproval*, *The Rose Tattoo* and *The Country Wife* at Guildford School of Acting where she recently graduated.

The Godalming Band was founded in 1937. It has a full and varied programme of concerts, fetes and contests under the baton of David Wright. Performing locally, the Band has given first performances of several new pieces written especially for them. At present the Band has around 30 members and also has a flourishing Youth Band. For further information about the Band, please contact Julie Rowling on 01483 428701.



Abracadabra (meaning 'magic formula') aims to redevelop and update the paediatric unit at the Royal Surrey County Hospital. Unfortunately there is no money available from the Health Authority for this project and we are completely reliant on donations and fundraising.

Currently our children's ward sees over 3,000 patients a year, with a further 5,000 outpatients. This means the facilities are well used and often do not live up to the extremely high standard of care provided by our doctors and nurses.

We visualise a centre especially designed for young people, including inside and outside play area for younger children, a designated room for adolescents and a place for parents to sleep, wash and eat, where they can be near to their child. The aim is to make a child's stay in hospital as worry free as possible and ensure they have access to the very best facilities.

However, it will take more than magic words and formulas for us to achieve our dreams – we need the support of all the community. If you would like to join the magic of Abracadabra, or would simply like to find out more, please contact the fundraising office on 01483.464146.

Registered charity No 1049776



print



multimedia



world wide web



Home Farm
Shere Road . Albury
Guildford . Surrey . GU5 9BL

Tel: 01483 203147
Email: info@arterydesign.co.uk

www.arterydesign.co.uk

**Craigie
Taylor**
INTERNATIONAL Ltd

Craigie Taylor International
is pleased to be supporting

'Son et Lumiere'

and wishes all those involved every success

Craigie Taylor International, Sports Sponsorship & PR
Albury House, The Street, Albury, Guildford, GU5 9JL

Kate Waterfall, Managing Director

**BEFORE DECIDING ON THE FUTURE
YOU NEED INDEPENDENT EXPERT ADVICE**



We take the stress and worry off your shoulders, and show you the best possible options. Grace Consulting offers a unique consultancy service to those reviewing long term options for elderly parents. Our expert professional staff can help you through legal, financial and statutory matters, whilst providing totally objective help and advice.

Whatever kind of help you need – from organising short term home support to long term residential care, Grace has the skills and expertise to help you come to an informed decision.

Don't wait until a problem turns into a crisis.

Freephone 0800 137669

Orchard House, Albury,
Guildford, Surrey GU5 9AG



grace
CONSULTING
Options in Long Term Care

THERE, BUT FOR THE GRACE...

**MAKING MONEY
MAKE MONEY**

Tilney Investment Management has over 160 years experience of providing professional investment services. Making money make money has been the essence of the business and from our national network of offices we manage money for over 12,000 clients.

- Tilney Managed Portfolio
- Premier Advisory Service
- Individual Savings Plans (ISAs)
- Pension Fund Management
- Cash Management and Custodial Services
- Trusts and Charitable Funds Management

For more information please call :-

Ian Wilkins
on 0800 100 1166
36 Queen Street
London
EC4R 1BN

www.tilney.com

Also at: Birmingham, Edinburgh, Glasgow,
London, Manchester, Peterborough and Shrewsbury

talk to **TILNEY**
INVESTMENT MANAGEMENT

Tilney Investment Management is a Member of the London Stock Exchange and is regulated by The Securities and Futures Authority for the conduct of investment business in the UK.



Best wishes from

CAFFÉ UNO

Freshly prepared pasta, pizza
and house specialities

Buon Appetito!

260 - 262 High Street, Guildford Tel 01483 569 199 Fax 01483 567 119

www.caffeuno.co.uk

BREWIN DOLPHIN • BELL LAWRIE WHITE • WISE SPEKE

Investment Managers and Stockbrokers nationwide

Investment sense with a personal touch

Portfolio Management,
ISA's, School Fees Planning,
Inheritance Tax Planning,
Pensions Advice.

For further information contact:
Michael or Nicholas Demetriadi



BREWIN DOLPHIN

A division of Brewin Dolphin Securities Ltd

5 Giltspur Street, London EC1A 9BD.

Tel 020 7248 4400. Fax 020 7236 2034.

web: www.brewindolphin.co.uk email: info@brewin.co.uk

BREWIN DOLPHIN SECURITIES LTD

A member of the London Stock Exchange
and regulated by The Securities and Futures Authority Limited



Your Place in the Country

Country Houses Association has nine wonderful houses in the south of England. One of these is The Mansion at Albury Park, near Guildford. It is an impressive building with important features by Pugin and Soane, and 63 unforgettable chimneys! The house is open to the public on Wednesday and Thursday afternoons between May and September. The Mansion is divided into 45 apartments for retired people. The average inclusive cost is £45 per day, which covers all meals, cleaning and services.

To find out more telephone the Administrators,
Paul and Lalage Glaister.

Country Houses Association
The Mansion, Albury Park
Guildford GU5 9BB
01483 202964

jellytree video arts

Based at the Institute for New Media Performance Research - University of Surrey, jellytree video arts is at the cutting edge of video as an integral part of artistic performance.

In addition to directing live performance video productions in many of the UK dance music festivals, it provides workshops for adults and children teaching video basics and creative potential.

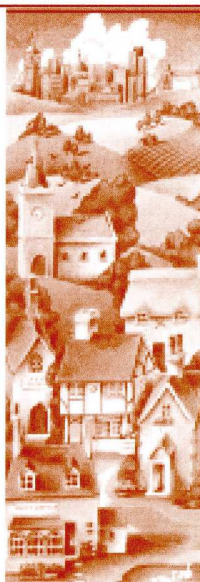
Astral Design is a specialist lighting design company operating internationally in large scale theatre and open air productions. The company is particularly pleased to be involved with the Son et Lumière.



Star Energy send every good
wish for the Albury Son et
Lumière

Sainsbury's is pleased to support the Albury Son et Lumière

SHERE ARTS
WISHES EVERYONE
A VERY ILLUMINATING EVENING



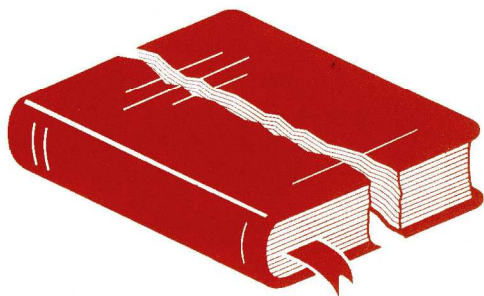
Shere House. Middle Street. Shere. Surrey GU5 9HF
TEL 01483 203777. FAX 01483 202944. ISDN 01483 203111.
Email studio@sherearts.co.uk Web www.sherearts.co.uk

Shere Arts
CREATIVE DESIGN & PRINT



ALBURY QUARRY AND LANDFILL

Wish Good Luck & Good Weather
for the show at Albury



© 2000 Tite & Lewis

We're breaking the law.

The law that says lawyers don't understand your agenda. The law that says they don't talk your language. The law that says you won't get 'yes' for an answer. The law that says your needs come second. The law that says you can't.

You can.

TITE & LEWIS

In association with **ERNST & YOUNG**

Tite & Lewis, Alder Castle, 10 Noble Street, London EC2V 7TL.
Telephone +44 (0)20 7606 2211 Fax +44 (0)20 7606 3311
www.titeandlewis.com



LAND & WATER



Delighted to Support the Son et Lumière

**The Local Company
With Nationwide Business
www.land-water.co.uk**

No: 586

Son et Lumière

Albury Park

Saturday 2nd September 2000
8.00pm

£12 Adult

£6 Child



Gates open for picnic 6.30pm

Admit One

